

Automations for swing leaves with underground motor

770N 230V

Underground electromechanical operator



Max width single leaf

2 - 3,5 m

Max weight

500 Kg

Use frequency

S3 - 30%

- Invisible operator
- Access to the operator is possible without removing the leaf
- Manual release with double lever accessible both from inside and outside of the property (Patented)



230V SAFEzone system:
770 230V + E045 or E145 + SAFEcoder



GREENTech 230V system:
770 230V + E045 or E145



DIMENSIONS AND TECHNICAL SPECIFICATIONS

Model	770N 230V
Power supply voltage	220-240V~ 50/60 Hz
Motor	Asynchronous single phase
Max. power	380 W
Max. torque	330 Nm (*)
Max. angular speed	6 °/s (*)
Max. leaf weight	500 Kg (see graph)
Max. leaf opening angle	110° (140° and 180° with optional kit)
Operating ambient temperature	-20°C ÷ + 55°C
Thermal protection	140°C
Protection class	IP67
Weight	12 Kg (with foundation box 14 Kg)
Use frequency	S3 30%
Max. leaf width	2 m (3.5 m with electric lock)
Dimensions (LxDxH)	360 x 150 x 140 (foundation box 430 x 307,5 x 214) mm
Electronic equipment	Not included

(*) data referred to 230V~ 50Hz.

FAMILY MODELS

Model	Item code
770N 230V	10675201

PACKS

770N 230V includes: an electromechanical operator, installation accessories, two release keys, a 400V 12.5µF thrust capacitor.

Foundation box includes: a foundation box, a stainless steel lid, a leaf supporting bracket equipped with a lever release system, two release keys and installation accessories.

Typical Installation Examples page. 338

ELECTRONIC CONTROL UNITS



E045 electronic control unit
Info at page 144

790005



E145 electronic control unit
Info at page 146

790006

ACCESSORIES



Enclosure mod. L for electronic control units

720118



Enclosure mod. E for electronic control units

720119



Enclosure mod. LM for electronic control units

720309

>>



Encoder unit for 770N

404035



BUS XIB interface (for E045 or E024S control unit with non BUS photocell)

790062



Stainless steel foundation box with release system (Patented)

490110



Foundation box with release system (Patented)

490065



Release lock with customised key

712104001-25



Opening to 140° kit

390612

>>



Opening to 180° kit

490111



Internal opening mechanical stop

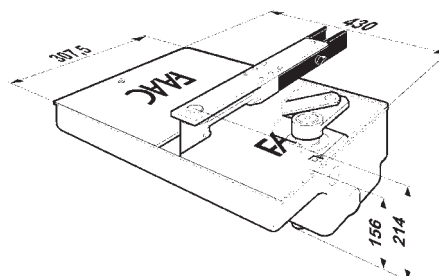
722121



Internal closing mechanical stop

722122

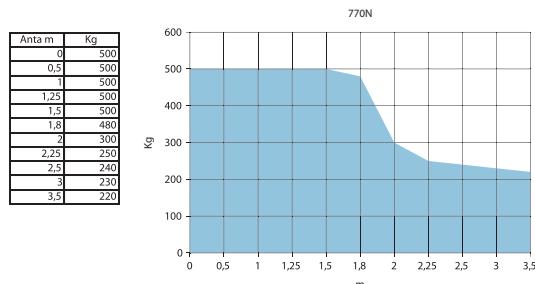
INSTALLATION DIMENSIONS (MM)



NOTE

ATTENTION: The operator 770N must be supplied with a foundation box. For a two-leaf gate, provide two operators, two foundation boxes and electronic control unit.

GRAPHIC



OTHER ACCESSORIES

Key operated buttons
page 176

Safety devices
page 190

Transmitters and receivers
page 168

Photocells and columns
page 186

Flashing lights
page 198

Various accessories
page 200